

## 10ft Offshore Containers - DNV 2.7-1

### Refrigerated container



Certified by Lloyd's Register according to the DNV 2.7-1 offshore regulations. The reefer containers are designed, built, tested and certified in compliance with these norms. The lifting equipment (WLL10 tons slings set) is certified as well. The main frame is constructed from high grade steel and is specially designed for the offshore industry. The design of the container is unique and above all functional.

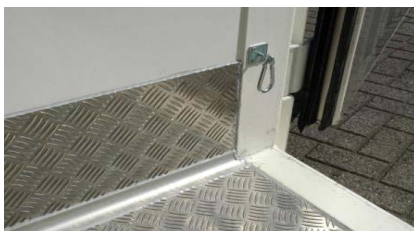
~Lease & purchase~

### Standard specifications

- Rental or sales option
- High loading capacity (volume & weight)
- Easy detachable protection frame
- High performance, reliable, machineries
- Carrier, Thermo King or Daikin machineries also stackable models available

### Optional

- Cargo net
- Chill curtain
- Internal lighting
- Temperature (Partlow) recorder 5 year machinery warranty alarm



### Detailed Container Specification

<b>External Dims</b>	Length 2991 mm x Width 2438 mm x Height 2591 mm
<b>Internal Dims</b>	Length 2350 mm x Width 2260 mm x Height 2260 mm
<b>Door Opening</b>	Width 2260 mm x Height 2200 mm
<b>Cubic Capacity</b>	12m <sup>3</sup>
<b>Max Gross Weight</b>	10,600 Kgs
<b>Tare Weight</b>	2,050 Kgs
<b>Top &amp; Bottom Side Rail</b>	Corten steel/M.G.S.S or Aluminium
<b>Outside roof &amp; Sideline</b>	Corten steel/M.G.S.S or Aluminium
<b>Inside Lining</b>	High grade stainless steel
<b>Inside floor</b>	Aluminium T-Bar floor

### Refrigeration Packages

<b>Manufacturer</b>	Carrier
<b>Unit Type</b>	69NT20/40
<b>Type of System</b>	Picture Frame / all electric
<b>Electrical system</b>	380/460 Volt 50/60Hz
<b>Cooling Capacity</b>	at -18°C 4.9kW / +2°C 9.4kW
<b>Power Consumption</b>	14/16 Amp
<b>Temp Recording</b>	31 Day mechanical Partlow recorder
<b>Temp Range</b>	-22°C / +22°C at +32°C ambient
<b>Automatic defrost</b>	adjustable 3 – 6 – 12 or 24hrs
<b>Compressor</b>	6 Cylinders, 9/12.5 Hp
<b>Refrigerant</b>	R409a or R134a



### Necessary Provisions / Remarks

The unit should be connected at 380/460V, resistor: 25Amp. Slow. The plug: 32 Amp, 4 poles (3 phase + earth)