

## 20ft Refurbished Offshore Containers – EN12079

### Refrigerated container



Certified by Lloyd's Register according to the EN12079 offshore regulations. The reefer containers are designed, built, tested and certified in compliance with these norms. The lifting equipment (WLL10 tons slings set) is certified as well.

The Container box is fully reconditioned. An MPI / Load test is then carried out. These tests are according to the European standard, EN12079. Two certificates (MPI certificate and a Load test certificate) come with each container. The box is also CSC-plated according to ISO-norms (Cargo Security Certificate), which is valid for 30 months.

**~Lease, lease/purchase & purchase~**

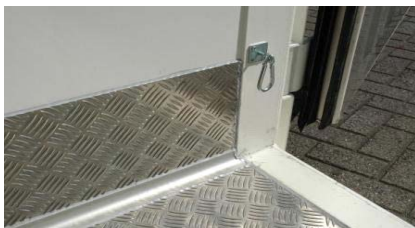
### Standard specifications

- Rental or sales option
- High loading capacity (volume & weight)
- Easy detachable protection frame
- High performance, reliable, machineries
- Carrier, Thermo King or Daikin machineries also stackable models available



### Optional

- Cargo net
- Chill curtain
- Internal lighting
- Temperature (Partlow) recorder 5 year machinery warranty alarm



### Detailed Container Specification

<b>External Dims</b>	Length 6.06 x Width 2.46 x Height 2.60 m (incl. pad-eyes 2.7 m)
<b>Door Opening</b>	Width 2.26 x Height 2.20 m
<b>Cubic Capacity</b>	24m <sup>3</sup>
<b>Max Gross Weight</b>	20,000 Kgs
<b>Tare Weight</b>	5,500 Kgs
<b>Top &amp; Bottom Side Rail</b>	high grade steel
<b>Outside roof &amp; Sideline</b>	high grade steel
<b>Inside Lining</b>	Inside lining polyester
<b>Inside floor</b>	aluminum flat floor

### Refrigeration Packages

The container is equipped with completely reconditioned Carrier 69NT40 machinery, which can both freeze and chill. The temperature range goes from -22°C up to +22°C. It is an all-electric system. Container box

<b>Manufacturer</b>	Carrier
<b>Unit Type</b>	69NT20/40
<b>Type of System</b>	Picture Frame / all electric
<b>Electrical system</b>	380/460 Volt 50/60Hz
<b>Cooling Capacity</b>	at -18°C 4.9kW / +2°C 9.4kW
<b>Power Consumption</b>	14/16 Amp
<b>Temp Recording</b>	31 Day mechanical Partlow recorder
<b>Temp Range</b>	-22°C / +22°C at +32°C ambient
<b>Automatic defrost</b>	adjustable 3 – 6 – 12 or 24hrs
<b>Compressor</b>	6 Cylinders, 9/12.5 Hp
<b>Refrigerant</b>	R409a or R134a



### Necessary Provisions / Remarks

The unit should be connected at 380/460V, resistor: 25Amp. Slow. The plug: 32 Amp, 4 poles (3 phase + earth)